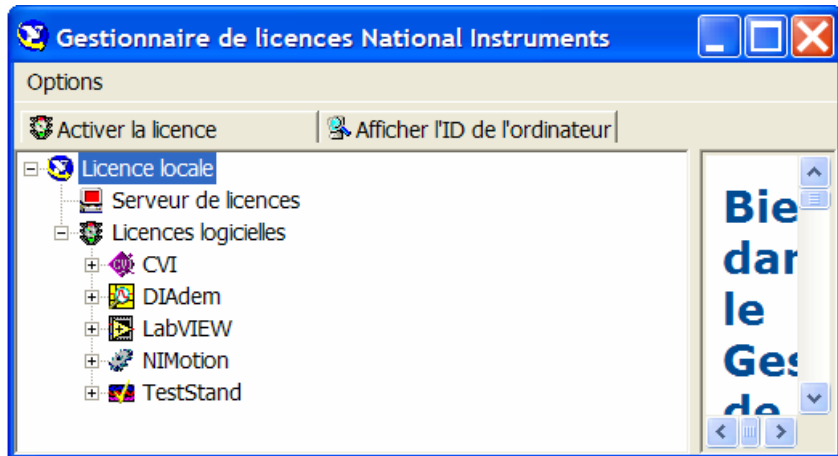


Product Activation and Licensing for EPFL

FOR ALL NI PRODUCTS WITH ACTIVATION

1) go to start -> all programs -> National Instruments -> NI License Manager:

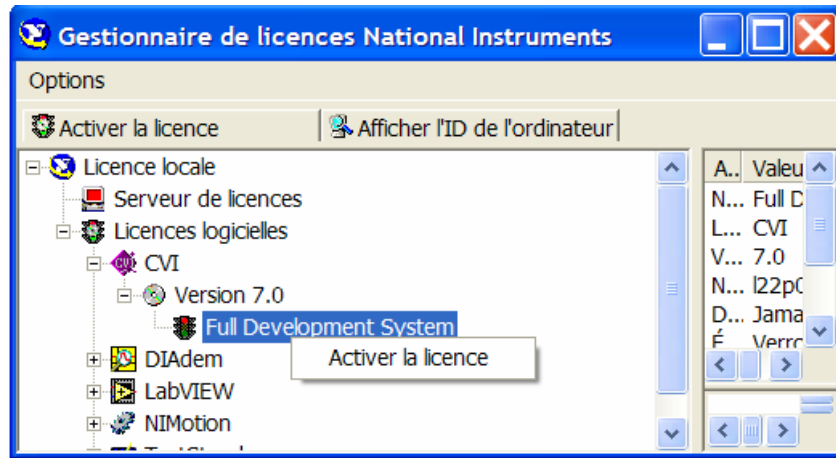


2) Click on the ID display and copy(or write down) YOUR ID number

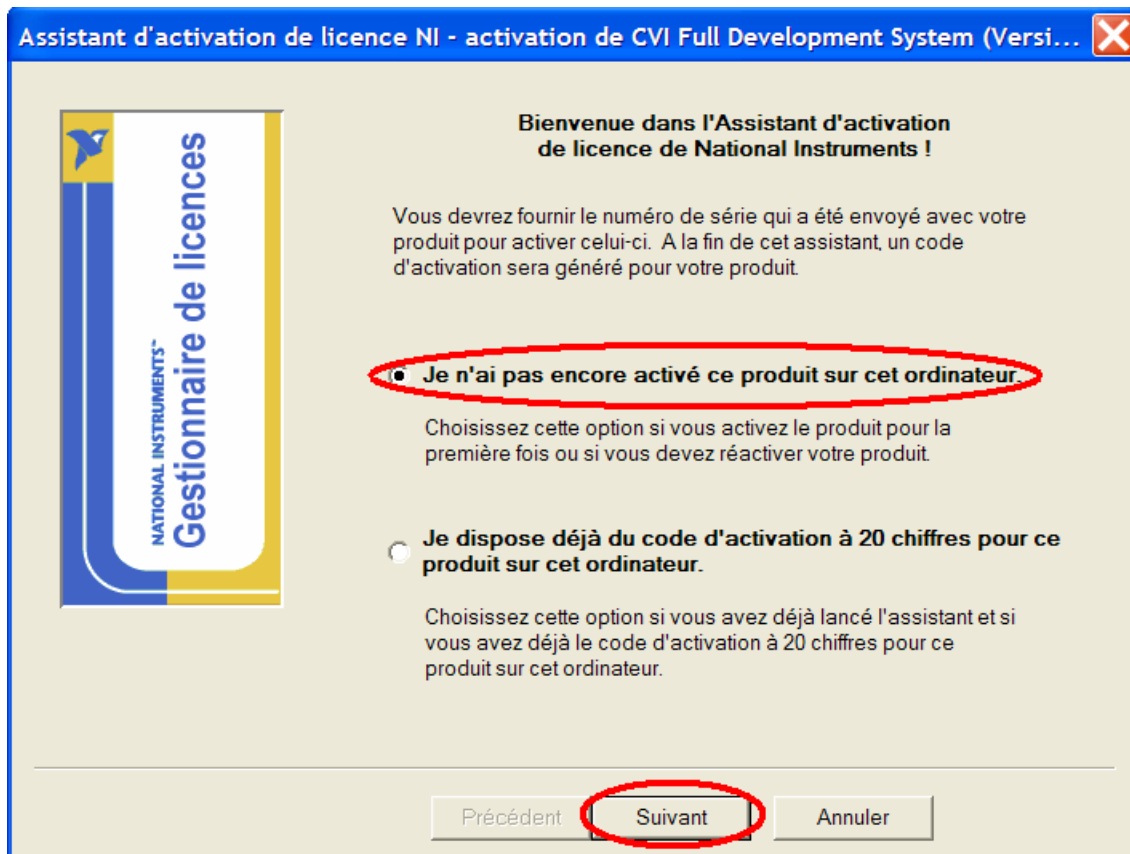


My Computer ID (identification) is: XXXX-YYYY-ZZZZ-XXXX

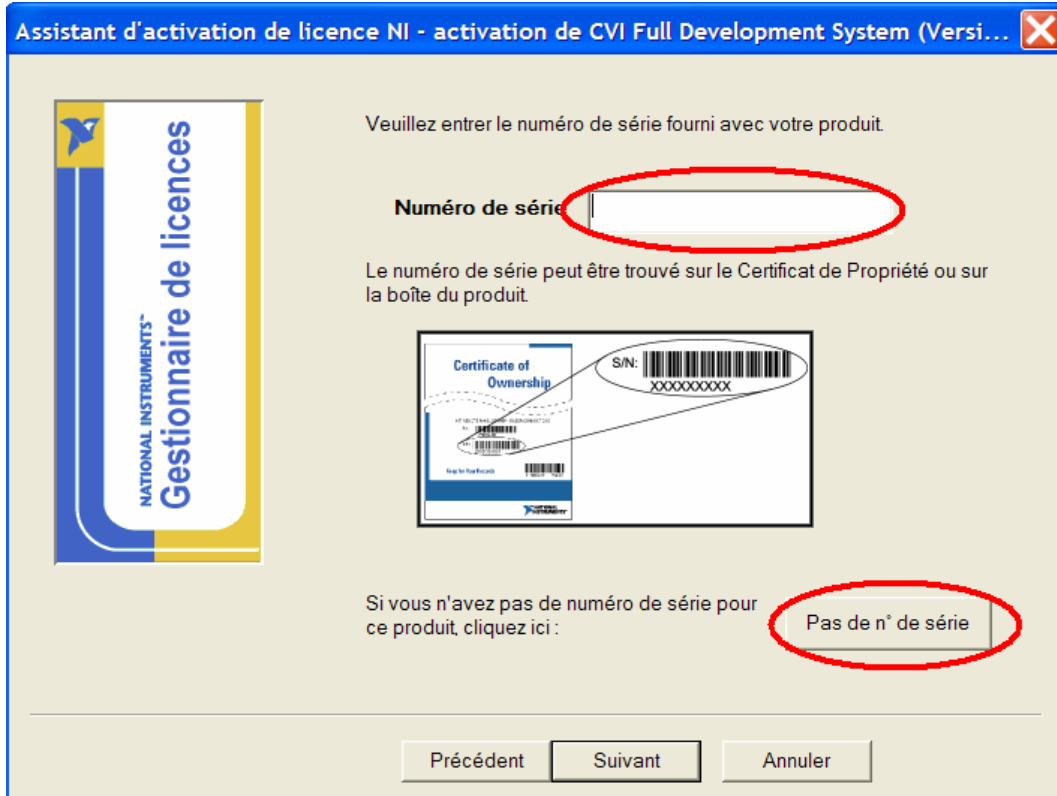
3) Go to the product you want activate and right click under the product, then choose activate license




4) Select the first one, then next




5) Delete what is written in the serial number case and choose: No Serial Number



6) Click NEXT

Assistant d'activation de licence NI - activation de CVI Full Development System (Versi... 



Cliquez ci-dessous pour obtenir le numéro de téléphone de votre filiale locale.

Afficher les numéros de téléphone internationaux

Assurez-vous d'avoir à votre disposition les informations ci-dessous pour votre représentant commercial :

Numéro de série :

Produit :

Version du produit :


ID d'ordinateur :


Cliquez sur Suivant lorsque vous êtes prêt à entrer votre code d'activation.

Pour réutiliser ces informations ultérieurement, cliquez sur Enregistrer. Enregistrer

Précédent
Suivant
Annuler

7) You should see this window:


Assistant d'activation de licence NI - activation de CVI Full Development System (Versi... 



Veuillez entrer le code d'activation à 20 chiffres associé à ce produit.

Vous pouvez soit :

- Copier le code d'activation et appuyer sur le bouton Coller



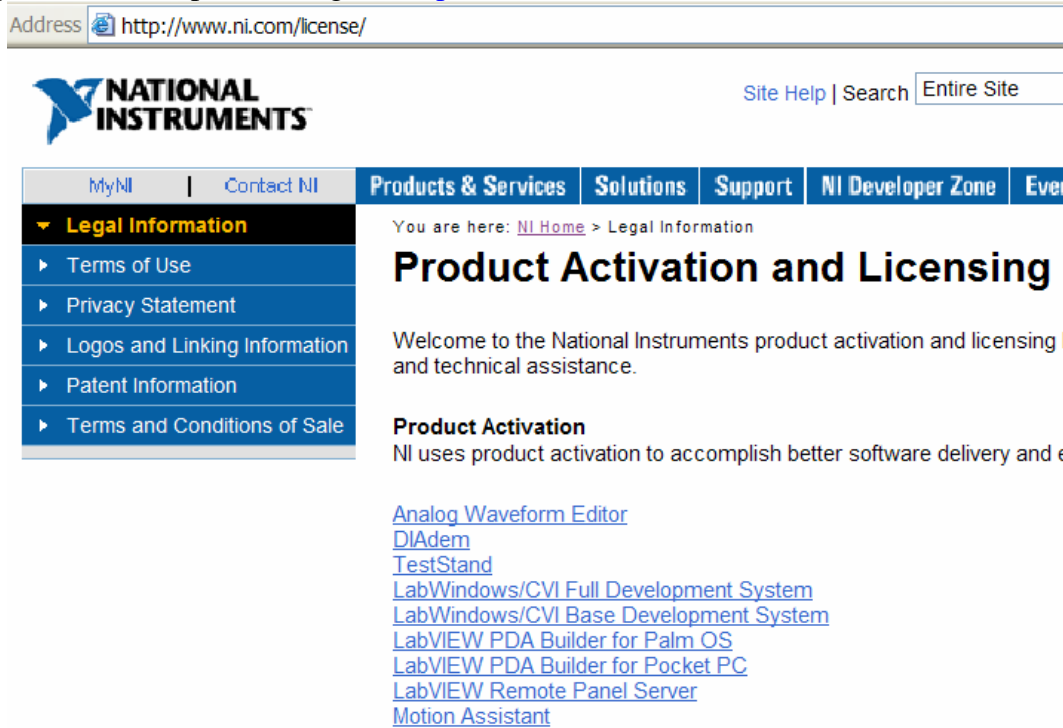
Coller

- Glisser-déposer le code d'activation vers toute case ci-dessous
- Entrer le code d'activation ci-dessous.

--
 --
 --
 --

Précédent
Suivant
Annuler

8) Open Internet Explorer and go to <http://www.ni.com/license/>



The screenshot shows the National Instruments website's license page. At the top, the address bar displays "http://www.ni.com/license/". The National Instruments logo is on the left, and "Site Help | Search Entire Site" is on the right. A navigation menu includes "MyNI", "Contact NI", "Products & Services", "Solutions", "Support", "NI Developer Zone", and "Events". A "Legal Information" dropdown menu is open, listing "Terms of Use", "Privacy Statement", "Logos and Linking Information", "Patent Information", and "Terms and Conditions of Sale". The main content area shows the breadcrumb "You are here: NI Home > Legal Information" and the title "Product Activation and Licensing". Below the title is a welcome message: "Welcome to the National Instruments product activation and licensing and technical assistance." A section titled "Product Activation" states: "NI uses product activation to accomplish better software delivery and e". A list of product links follows: "Analog Waveform Editor", "DIADEM", "TestStand", "LabWindows/CVI Full Development System", "LabWindows/CVI Base Development System", "LabVIEW PDA Builder for Palm OS", "LabVIEW PDA Builder for Pocket PC", "LabVIEW Remote Panel Server", and "Motion Assistant".

9) Choose which product you want activate. For the example, I will choose:
LabWINDOWS/CVI Full Development System

10) Fill the information needed, then hit Continue:

Activating Your Product

Thank you for contacting National Instruments to activate your product. Use this page to activate your product 24 hours a day, 7 days a week.

[Privacy Policy](#)

Your Information (all fields are required)

First Name	<input type="text" value="jean"/>
Last Name	<input type="text" value="dupond"/>
Organization	<input type="text" value="EPFL"/>
Email Address	<input type="text" value="jean.dupond@epfl.ch"/>
Operating System	Windows
Serial Number	<input type="text" value="XXXXXXXXXX"/>
Product Version	7.0
Computer ID	<input type="text" value="XXXX-YYYY-ZZZZ-XXXX"/>

Enter the serial number given by Distrilog

Paste your computer ID

Continue

11) Select and copy(Ctrl-C) this activation code:

Activating Your Product

Activation Information

Your Activation Code is: 1X1X-2Y2Y-3Z3Z-4X4X-5Y5Y

Directions for users of Microsoft Windows:

Launch your software and select **Activate License** from the initial screen

-- or --

Launch the NI License Manager from the National Instruments entry in the Windows **Start** menu. Select **Activate License** from the toolbar.

-- then --

1. Choose "I already have an activation code for this product on this computer."
2. Follow the steps provided in the wizard to enter the activation code above.
3. Enter the Activation Code above. You can copy and paste it into the form or drag and drop it from the web page into the Activation Code Page (highlight then drag to the Activation Code page).

For your convenience, we e-mail your Activation Code to the address you provided in the previous screen. Save this Activation Code. With it, you can re-activate your product without repeating this process.

Note: The Activation Code provided only works with the computer whose ID you provided at the beginning of this process.

[Problems with your new activation code?](#)

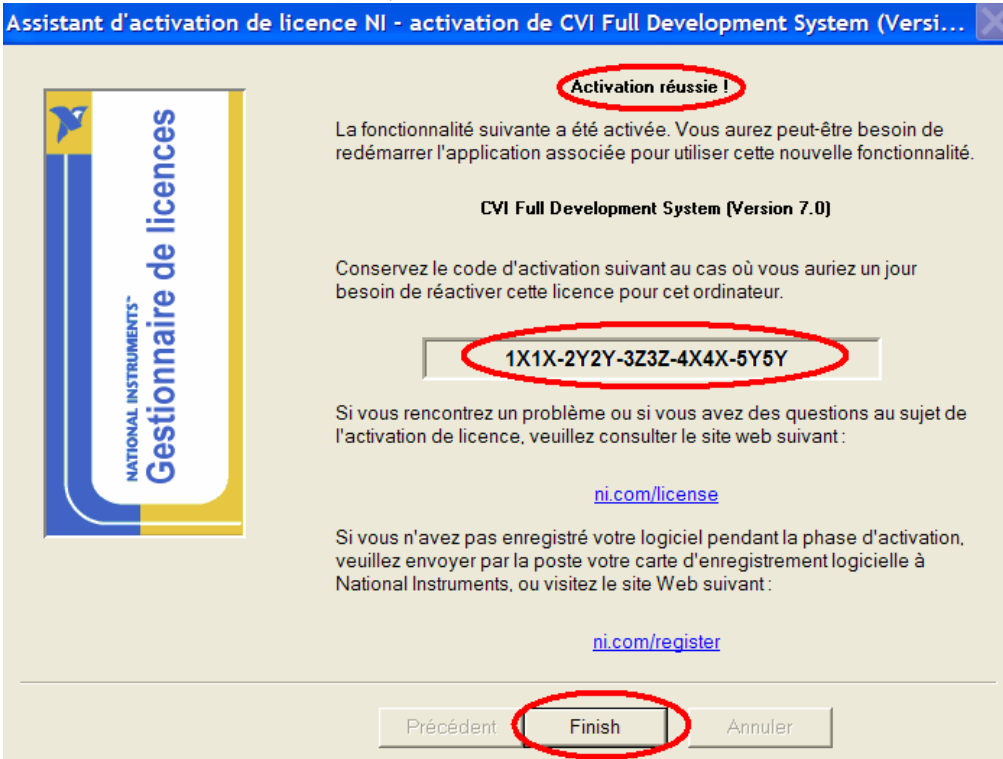
Have you registered your NI product? [Register online!](#)

12) Go back to have the figure 7(NI License Manager) and hit the paste button. You should have the image below:

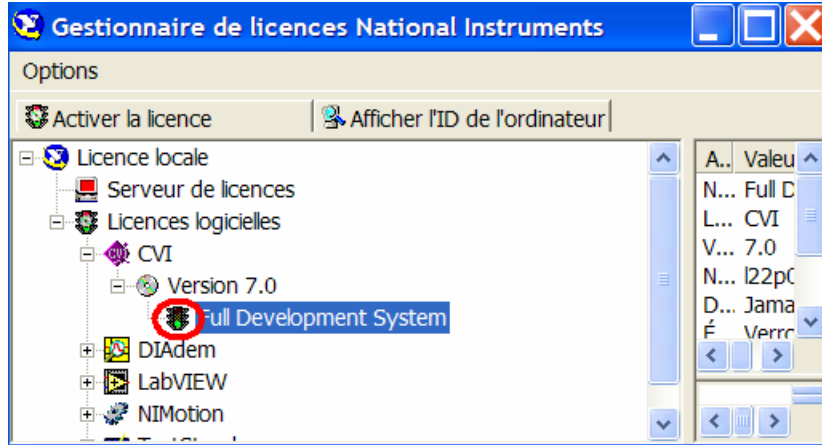


Then, click NEXT.

13) You should have this window, then click finish:



14) The software is activated if the traffic light is green.



YOUR SOFTWARE IS ACTIVATED

If you have any problem to activate products, please contact NI either by email: ni.com/ask or either by phone: 056/200.51.51 and ask for technical support.

Wednesday, 29th July 2004
National Instruments Suisse